

Bella siccome un angelo

from
DON PASQUALE

Larghetto cantabile

Gaetano Donizetti

MALATESTA:

Bel - la sic-co - me un an - ge - lo

p

This system contains the first vocal line and the first system of piano accompaniment. The vocal line is in bass clef, 3/4 time, with a key signature of three flats. The piano accompaniment is in treble and bass clefs, 3/4 time, with a key signature of three flats. The piano part features a steady eighth-note accompaniment in the right hand and a more active bass line in the left hand.

in ter - ra pel - le - gri - no, fre - sca sic - co - me

This system contains the second vocal line and the second system of piano accompaniment. The vocal line continues with the same melodic and harmonic structure. The piano accompaniment maintains the same rhythmic pattern.

gi - glio che s'a-pre sul mat - ti - no,

This system contains the third vocal line and the third system of piano accompaniment. The vocal line concludes with a triplet of eighth notes. The piano accompaniment also features a triplet in the right hand.

accel. e cresc.

oc - chio che par - la e ri - de, sguar - do che i cor con -

accel. e cresc.

qui-de, chio - ma che vin - ce l'e - ba - no, sor - ri - so in - can - ta -

rall. *a tempo* *dolce*

col canto *p*

Poco più mosso

tor, sor - ri - so in can - ta - tor...

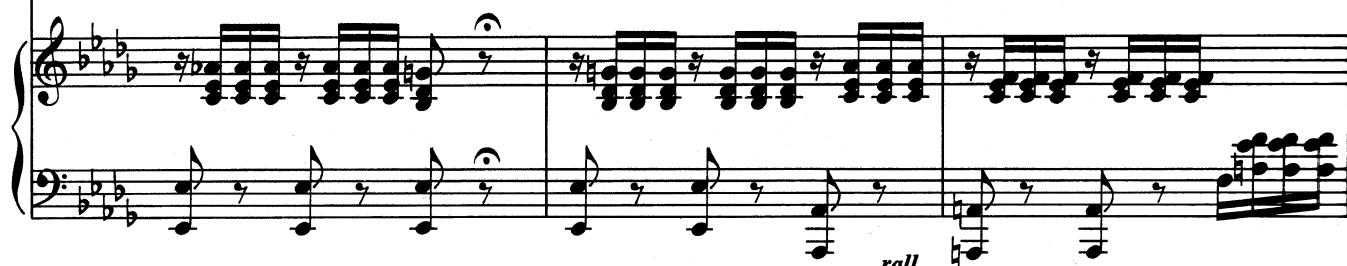
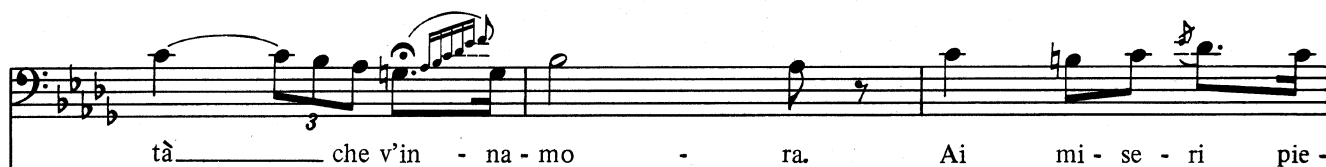
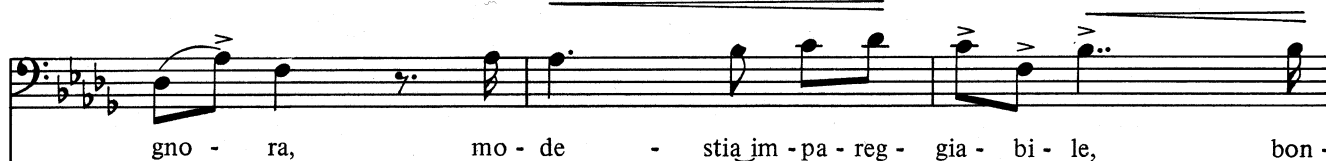
f

rall. *a tempo* *rall.*

a tempo



a tempo



na - sce - re per far be - a - to un cor, be - a - to un

string. cor, il ciel l'ha fat - ta na - sce-re per far be-a-to un cor, per far be - a - to un

string.

rall. *a tempo* cor, il ciel l'ha fat-ta na - sce-re per far be - a-to, be-a - -

rall. *a tempo*

ff *p*

to, per far be - a - to un cor.

p